

Renault R-35 Instructions

Updated: 2 Jan 2013

Note: On the model, mountain folds are indicated by a dashed line - - - and valley folds by a dotted line

Building the Tracks

Score and cut out the right side suspension assembly. Cut out the suspension detail pieces and glue the wheels behind the supports. Glue the springs on to the main assembly and then glue the wheel and supports to the main assembly on top of the springs. The drive and idler wheels should be cut out and glued on next. Fold the suspension assembly into shape. If you want to reinforce the assembly, glue strips of card to the inside now.

Score, cut out, and fold the tracks in half. Put some glue on the bottom of the suspension assembly and place in the middle of the tracks, align the back side with the edge of the tracks. When the glue has dried enough, start wrapping one side around the end and back over the top and glue it down. Do the same with the other side. They should meet in the middle, but some trimming might be necessary.

Repeat these steps for the left side.

Building the Hull

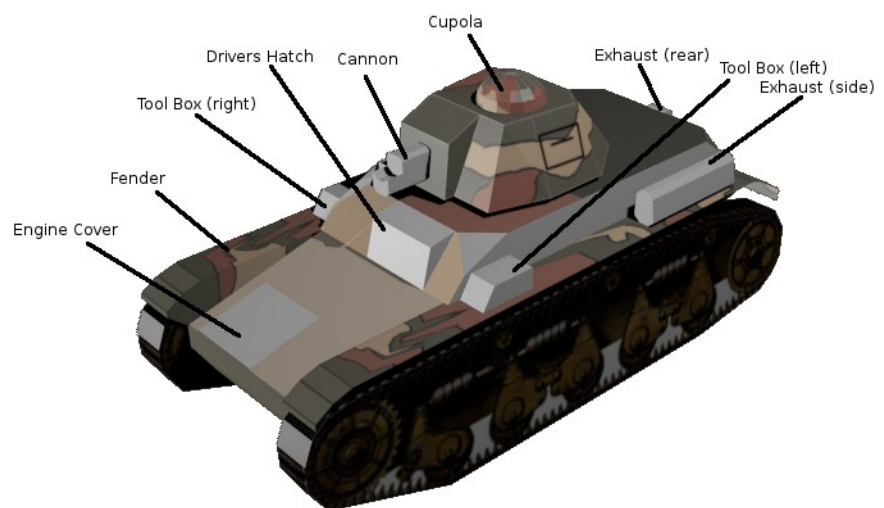
Score and cut out the hull. Remove the circle on the top where the turret support will go. Reinforce the inside if desired and glue the hull together. I start by gluing the rear to both sides and then work the front over until it meets the rear.

Remove the engine cover and glue it over the gray square closest to the front.

Remove the drivers hatch fold and glue it over the upper gray square.

Remove the right fender fold into shape and glue. Glue the right suspension assembly inside the fender. The bottom of the fender (white part) should meet the bottom of the white area on the suspension and the fender should be centered over the tracks. Glue the fenders and suspension to the hull and repeat for the other side.

Remove the tool boxes on glue them on top of the fenders on each side. The side exhaust will go behind the left-hand tool box.



Copyright 2013 by Jakim Friant

This work is licensed under the Creative Commons Attribution-ShareAlike 3.0 Unported License. To view a copy of this license, visit <http://creativecommons.org/licenses/by-sa/3.0/>.

Remove the rear axle covers and glue to the lower part of rear hull below the bend. They should cover the center of the rear wheel.

The rear exhaust piece is glued near the top of the back, between the access panels. Make an exhaust pipe by rolling a 12mm long piece of paper until you have a small tube. Bend and glue between the rear and side exhaust.

The spare wheel is optional, and can be glued over the left-hand access panel on the rear of the hull.

Building the Turret

Score and remove the turret. I found it was easiest to start from the back, glue the sides to the bottom and then work the front into place, finally gluing the top down.

NOTE: Due to the shape of the turret you may have to press on the back or sides to get the sides to match up with the top.

Remove the cupola sides and form into a circle (the bottom will fit to the outside edge of the ring). Remove the top, cut out the slice and form it into a convex dome and glue to the top of the cupola sides. Then glue to the turret.

The cannon is made in two parts. First assemble the box and glue to the center of the dark oval in the turret. Then roll a barrel from 5mm wide paper and glue into the center of the box so the end just sticks past the edge.

Build the machine gun box and glue in place beside the cannon.

Cut out the turret ring and test fit in the hull. Glue it the bottom of the turret.

